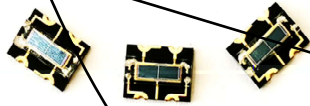
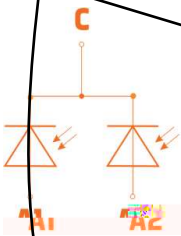


## FEATURES

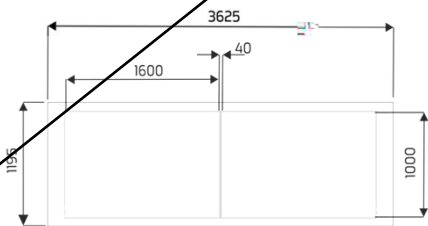
## TYPICAL APPLICATIONS

## KEY CHARACTERISTICS

Parameter	Value	Unit
	×	



## DIMENSIONS



## Absolute Maximum Ratings (Ta=25 )

Parameter	Symbol	Min.	Max.	Unit

## Electro-Optical Characteristics (Ta=25 )

Symbol	Parameter	Conditions	Min.	Typ.	Max.	Unit
$\lambda$	Spectral response range	---	400	---	1100	nm
$\lambda$						
$\theta$						

## Spectral Sensitivity

