

# **LT-GDM-02**

## Ground-Detecting Module

### Product Specifications

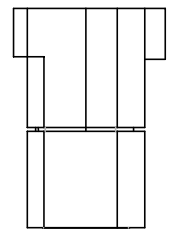
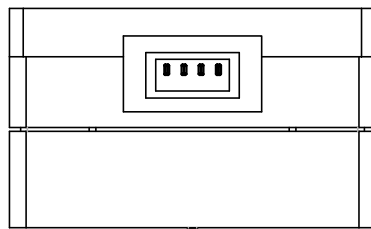
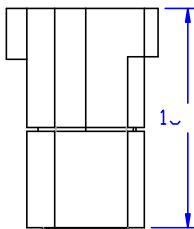
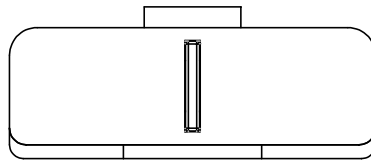
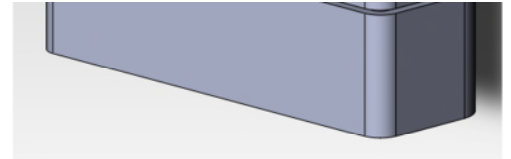
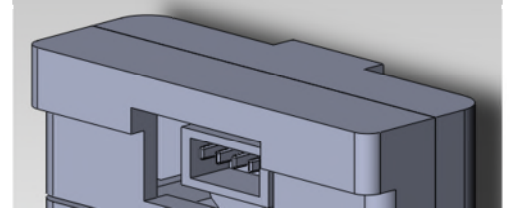
SPEC. NO. : SZ21082401  
DATE : 2021/08/24  
REV. : A/0

Approved By:

Checked By:

Prepared By:

## Dimensions of Module



**Notes:**

1. All dimensions are in millimeters.
2. Tolerance is  $\pm 0.50\text{mm}$  unless otherwise noted.
3. Specifications are subject to change without notice.

## Features

- Pb free product—RoHS compliant
- Fast response time
- High sensitivity
- Invisible wavelength  $\lambda=940\text{nm}$
- Integration structure

## Typical Applications

- Intelligent Sweeping Robot

## Absolute Maximum Ratings at $T_a=25$

Parameter		Symbol	Ratings	Unit
Input	Power Dissipation	$P_d$	170	mW
	Reverse Voltage	$V_R$	5	V
	Forward Current	$I_F$	100	mA
	Peak Forward Current <sup>*1</sup>	$I_{FP}$	250	mA
Output	Collector Power Dissipation	$P_c$	75	mW
	Collector Current	$I_C$	20	mA
	Collector-Emitter Voltage	$V_{CEO}$	30	V
	Emitter-Collector Voltage	$V_{ECO}$	5	V
Electrostatic Discharge (HBM)		ESD	4000	V
Operating Temperature Range		$T_{opr}$	-25 to + 65	
Storage Temperature Range		$T_{stg}$		

