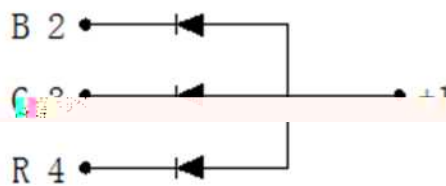
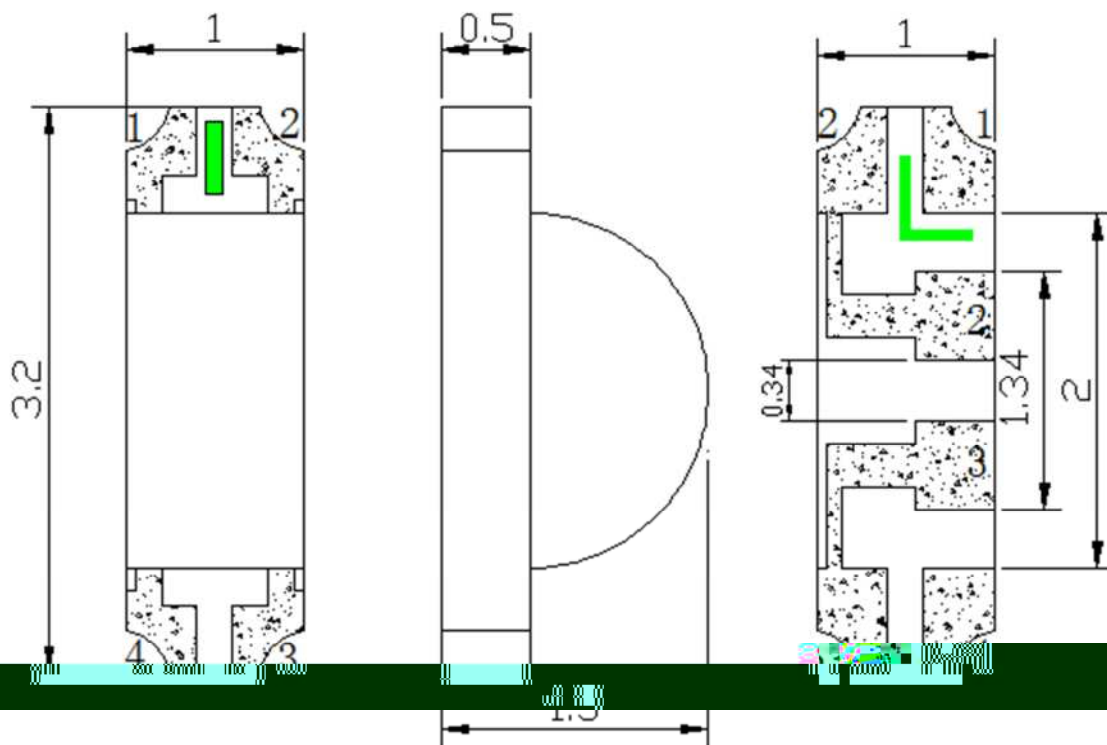




### Features

- ◆ Pb free product—RoHS compliant
- ◆ Low power consumption, High efficiency
- ◆ Reliable and rugged
- ◆ High luminous intensity
- ◆ Long life – solid state reliability
- ◆ Viewing angle: 120°(R/G/B)

### Package Dimension



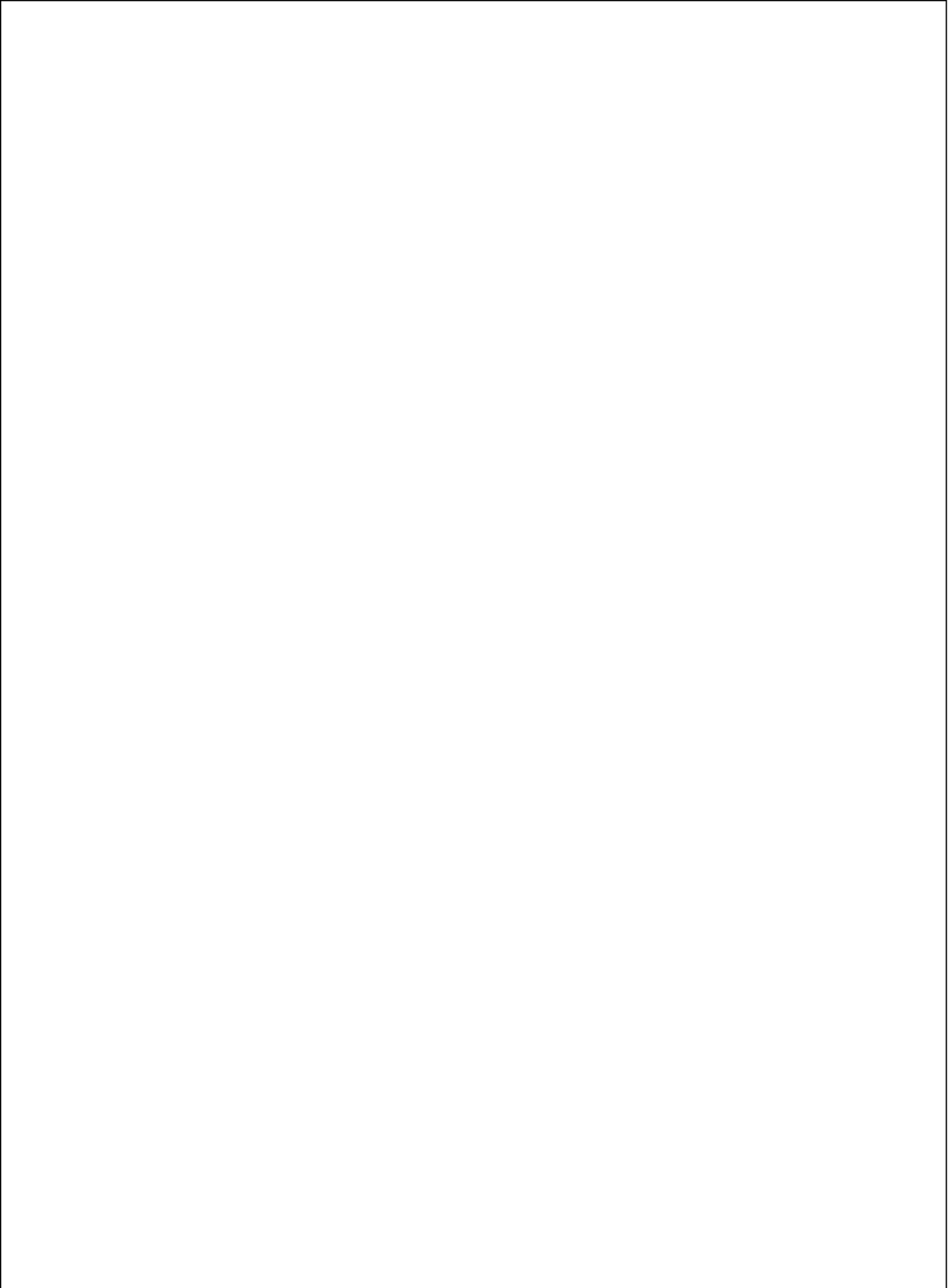
| Part No.             | Package | Lens Color  | Leadless | Source Color   | Base Color |
|----------------------|---------|-------------|----------|----------------|------------|
| SL-T3210RGBC020-L150 |         | Water Clear |          | Red/Green/Blue |            |

#### Notes:

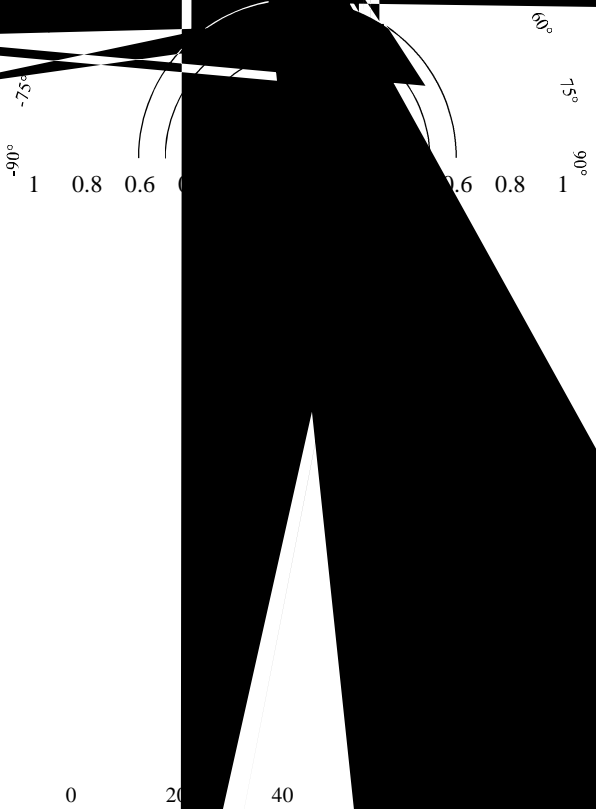
1. All dimensions are in millimeters.
2. Tolerance is  $\pm 0.10\text{mm}$  unless otherwise noted.
3. Specifications are subject to change without notice.

### Absolute Maximum Ratings at Ta=25

| Parameter                                | Red         | Green | Blue | Unit |
|--|-------------|-------|------|------|
| Power Dissipation                        | 55          | 80    | 80   | mW   |
| Peak Forward Current <sup>*2</sup>       | 60          | 60    | 60   | mA   |
| Continuous Forward Current               | 25          | 25    | 25   | mA   |
| Reverse Voltage                          | 5           | 5     | 5    | V    |
| Moisture Sensitivity Level <sup>*1</sup> | 4           |       |      |      |
| Operating Temperature Range              | -40 to + 85 |       |      |      |
| Storage Temperature Range                | -40         |       |      |      |



...  
Critical Area  
Temperature U



## Label Explanation

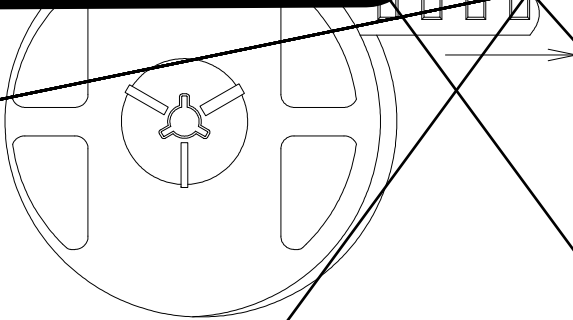
### LIGHT Universal Label

|   |                   |
|---|-------------------|
| <b>LIGHT</b><br>Light Electronics CO., LTD. |                   |
| MODEL NAME: _____                           | <br>LOT NO: _____ |
| QUANTITY: _____                             |                   |
| BIN: _____                                  |                   |
| PACKING DATE: _____                         |                   |
| REMARKS: _____                              |                   |

### Customer Defined Label

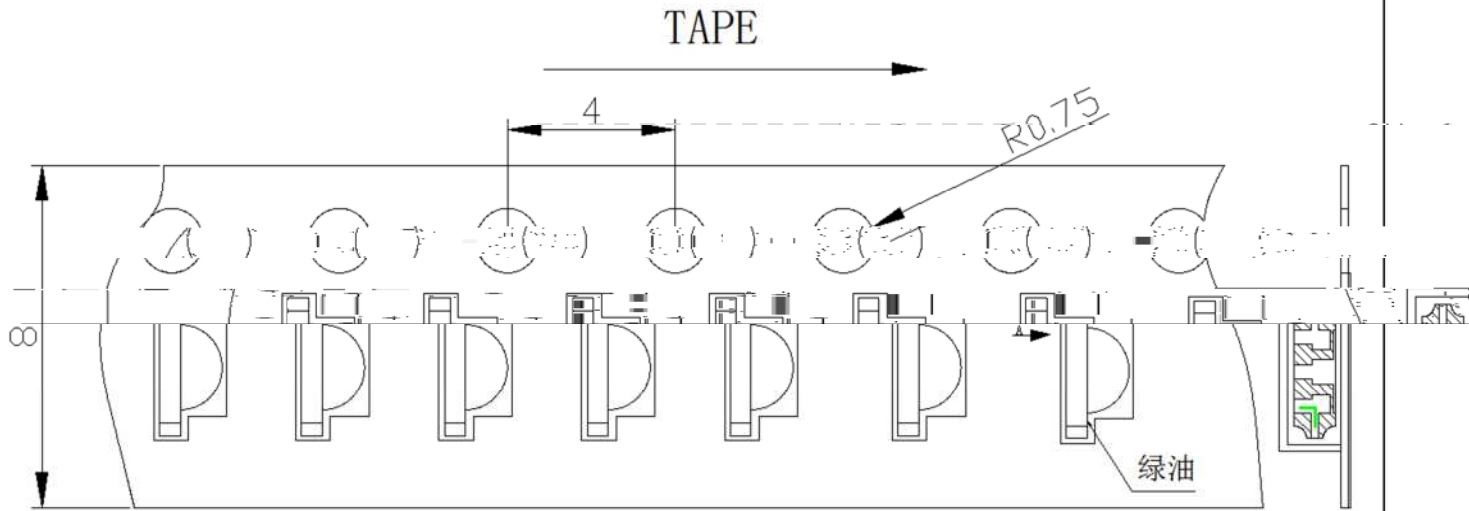
|   |                   |
|---|-------------------|
| <b>LIGHT</b><br>Light Electronics CO., LTD. |                   |
| MODEL NAME: _____                           | <br>LOT NO: _____ |
| QUANTITY: _____                             |                   |
| BIN: _____                                  |                   |
| PACKING DATE: _____                         |                   |
| CUSTOMER P/N: _____                         |                   |

## Reel Dimensions

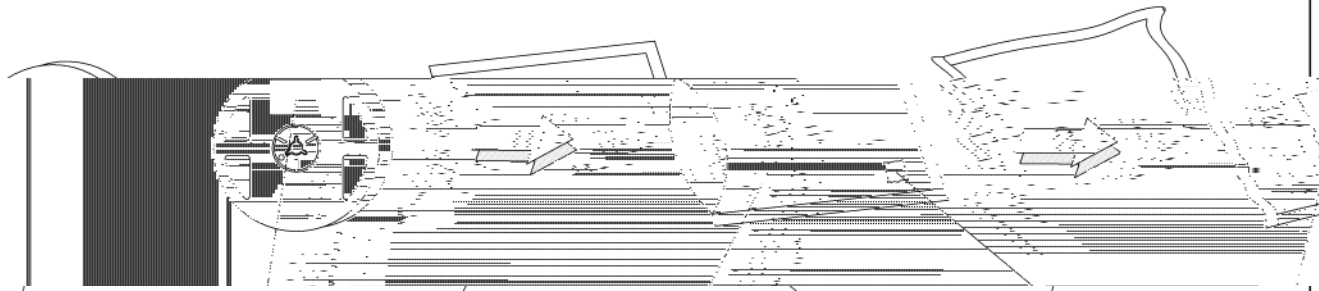


**Note:** Tolerance unless mentioned is  $\pm 0.2\text{mm}$ ; Unit = mm

**Carrier Tape Specifications(Loaded Quantity: 3000pcs/reel)**



**Moisture Resistant Packaging**



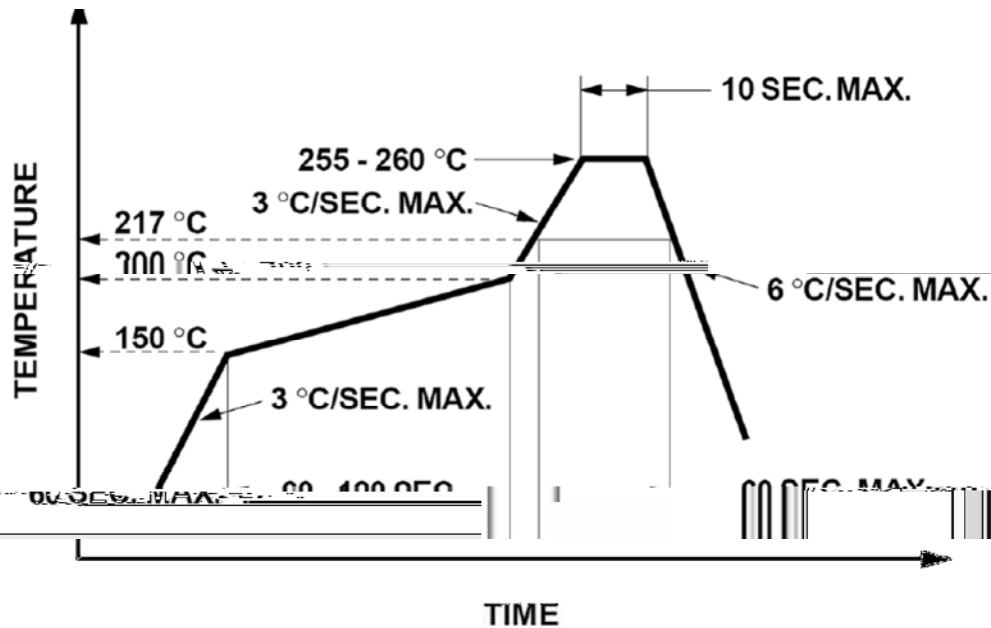
LIGHT universal Label

Aluminum moisture-proof bag

Desiccant

Customer defined Label or LIGHT universal Label

## Suggest IR Reflow Condition For Lead Free



1. Reflow soldering should not be done more than two times.
2. When soldering, do not put stress on the LEDs during heating.

## Soldering iron

1. When hand soldering, the temperature of the iron must less than 300 °C for 3 seconds.
2. The hand solder should be done only once.

## Repairing

Repair should not be done after the LEDs have been soldered. When repairing is unavoidable, a double-head soldering iron should be used (as below figure). It should be confirmed beforehand whether the characteristics of LEDs will or will not be damaged by repairing.

